

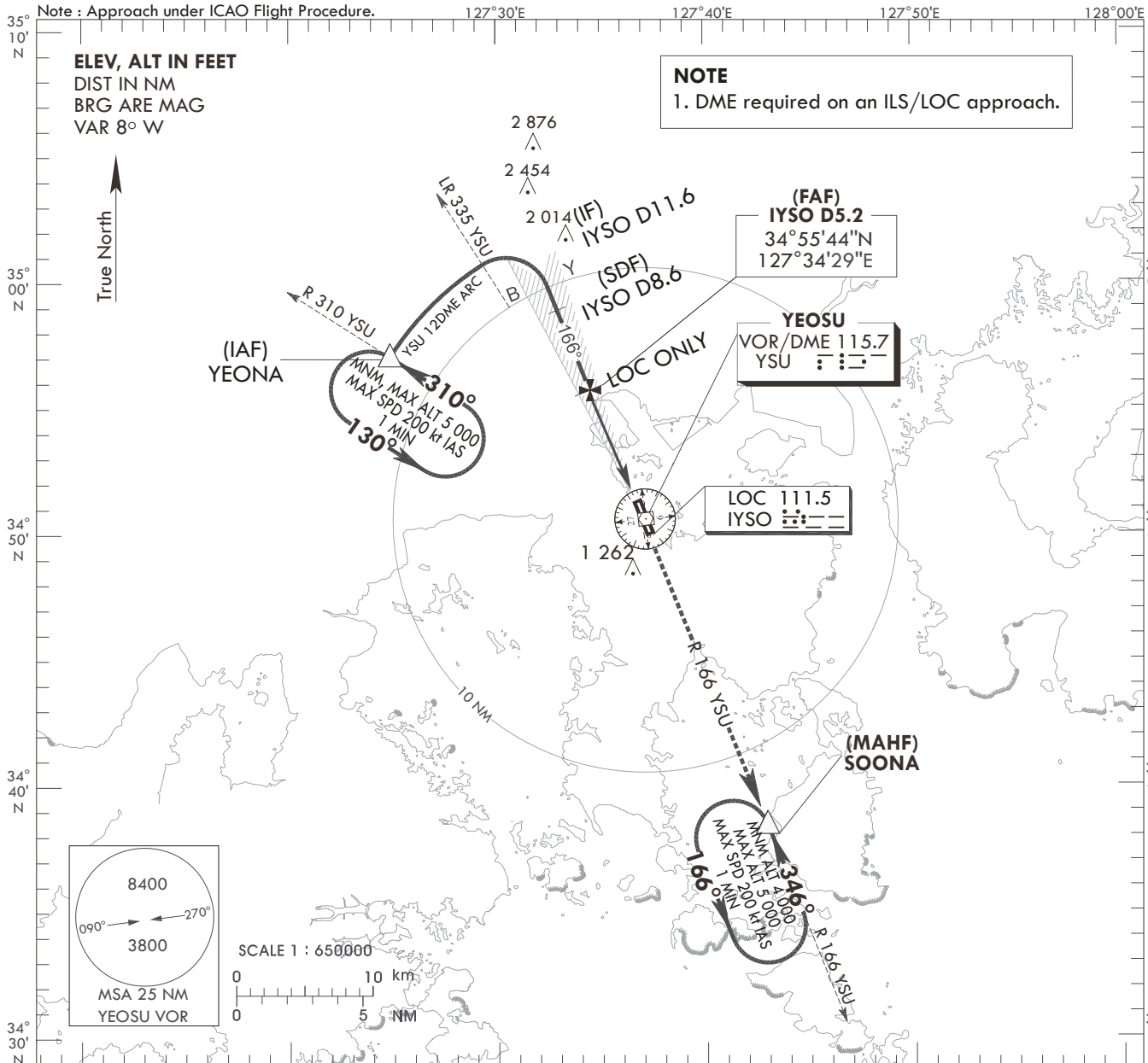
INSTRUMENT  
APPROACH  
CHART - ICAO

AERODROME ELEV 53 ft  
HEIGHTS RELATED TO  
THR RWY 17-ELEV 28 ft

SACHEON APP 135.4  
YEOSU TWR 122.5  
240.9

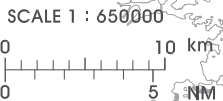
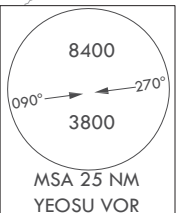
YEOSU/Yeosu (RKJY)  
ILS or LOC Y RWY 17

Note : Approach under ICAO Flight Procedure.

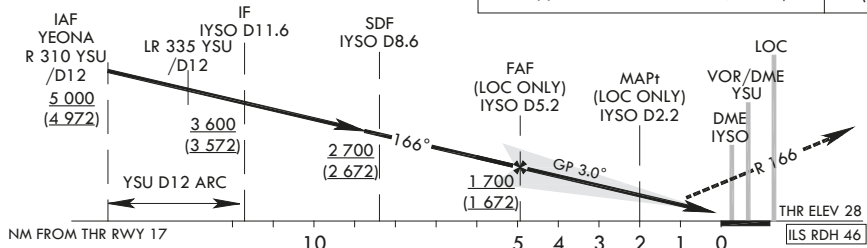


**NOTE**  
1. DME required on an ILS/LOC approach.

ELEV, ALT IN FEET  
DIST IN NM  
BRG ARE MAG  
VAR 8° W



| RECOMMENDED PROFILE(LOC ONLY)            |  | DME IYSO | 5                | 4                | 3            | 2.1          |
|--|--|----------|------------------|------------------|--------------|--------------|
| Final Approach Gradient 5.31%, 323 ft/NM |  | ALT(HGT) | 1 644<br>(1 616) | 1 321<br>(1 293) | 998<br>(970) | 740<br>(712) |



| CATEGORY         | DA(DH)/MDA(MDH)    | A        |       |   |                    | B |         |   |         | C |         |   |         | D |         |   |         |  |
|------------------|--------------------|----------|-------|---|--------------------|---|---------|---|---------|---|---------|---|---------|---|---------|---|---------|--|
|                  |                    | A        |       | B |                    | A |         | B |         | A |         | B |         | A |         | B |         |  |
| STA              | CAT-1<br>(CG 2.5%) | FULL     | 351   |   | 1 000 m            |   | 1 700 m |   | 1 200 m |   | 3 300 m |   | 4 000 m |   | 3 200 m |   | 3 900 m |  |
|                  |                    | ALS INOP | (323) |   |                    |   |         |   |         |   |         |   |         |   |         |   |         |  |
|                  | CAT-1<br>(CG 5.0%) | FULL     | 228   |   | RVR 550 m VIS 800m |   | 1 200 m |   | 1 200 m |   | 3 300 m |   | 4 000 m |   | 3 200 m |   | 3 900 m |  |
|                  |                    | ALS INOP | (200) |   |                    |   |         |   |         |   |         |   |         |   |         |   |         |  |
| LOC<br>(CG 2.5%) | FULL               | 910      |       |   |                    |   |         |   |         |   |         |   |         |   |         |   |         |  |
|                  | ALS INOP           | (882)    |       |   |                    |   |         |   |         |   |         |   |         |   |         |   |         |  |
| LOC<br>(CG 5.0%) | FULL               | 740      |       |   |                    |   |         |   |         |   |         |   |         |   |         |   |         |  |
|                  | ALS INOP           | (712)    |       |   |                    |   |         |   |         |   |         |   |         |   |         |   |         |  |

**MISSED APPROACH**  
Climb to R 166 YSU to SOONA and Hold at 4 000 ft

| Rate of descent | V/V fpm | Knots |     |     |     |     |
|-----------------|---------|-------|-----|-----|-----|-----|
|                 |         | 60    | 90  | 120 | 150 | 180 |
|                 |         | 318   | 478 | 637 | 796 | 955 |

\* Timing Not authorized for defining MAPt.  
\* Circling Not authorized.

Change : Information of obstacle height and radial.

YEOSU/Yeosu (RKJY)  
 ILS or LOC Y RWY 17

AERONAUTICAL DATA TABULATION

| ILS/LOC Approach to RWY 17 from YEONA |                           |                |                 |
|---------------------------------------|---------------------------|----------------|-----------------|
| Fix/point                             |                           | Coordinates    |                 |
| YEONA(IAF)                            | R 310 YSU /12.00 NM YSU   | 34°57'03.8" N  | 127°24'52.1" E  |
| D11.6 IYSO (IF)                       | BRG 165.50°/11.60 NM IYSO | 35°01'41.4" N  | 127°31'33.6" E  |
| D8.6 IYSO (SDF)                       | BRG 165.51°/8.60 NM IYSO  | 34°58'54.5" N  | 127°32'55.7" E  |
| D5.2 IYSO (FAP)                       | BRG 165.52°/5.17 NM IYSO  | 34°55'44.1" N  | 127°34'29.3" E  |
| D2.2 IYSO (MAPt LOC ONLY)             | BRG 165.52°/2.20 NM IYSO  | 34°52' 58.5" N | 127°35' 50.6" E |
| THR RWY 17                            |                           | 34°51'03.73" N | 127°36'46.77" E |
| IYSO DME                              |                           | 34°50'57.3" N  | 127°36'54.6" E  |
| YSU VOR/DME                           |                           | 34°50'34.2" N  | 127°37'08.2" E  |
| IYSO LOC                              |                           | 34°49'52.0" N  | 127°37'21.9" E  |
| SOONA                                 | BRG 165.96°/13.00 NM YSU  | 34°38'27.5" N  | 127°42'56.0" E  |

Change : Information of bearing and Coordinates.

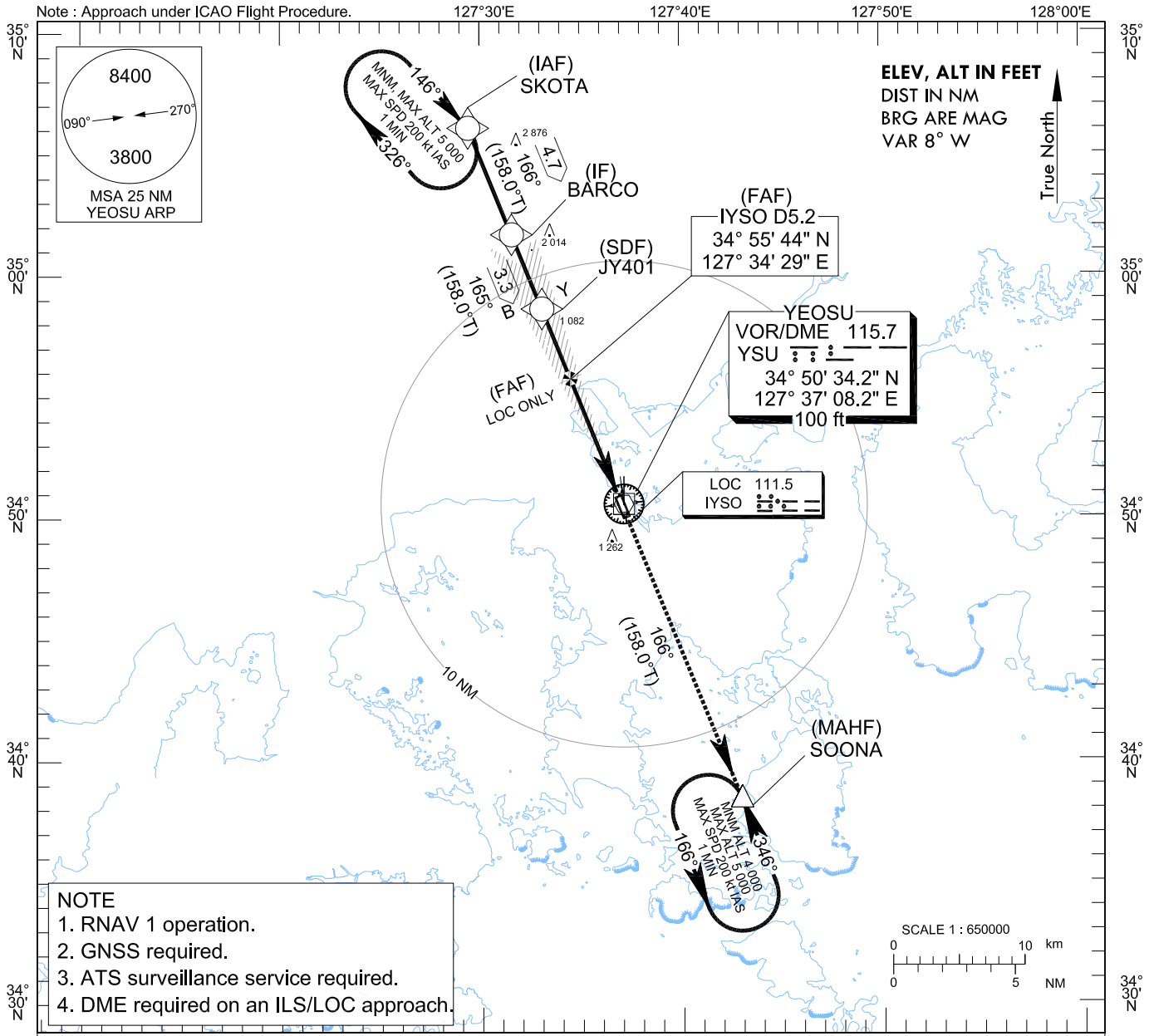
**INSTRUMENT APPROACH CHART - ICAO**

**AERODROME ELEV 53 ft**  
HEIGHTS REALTED TO  
THR RWY 17 - ELEV 28 ft

SACHEON APP 135.4  
YEOSU TWR 122.5  
240.9

**YEOSU/Yeosu (RKJY)**  
**ILS or LOC Z RWY 17**

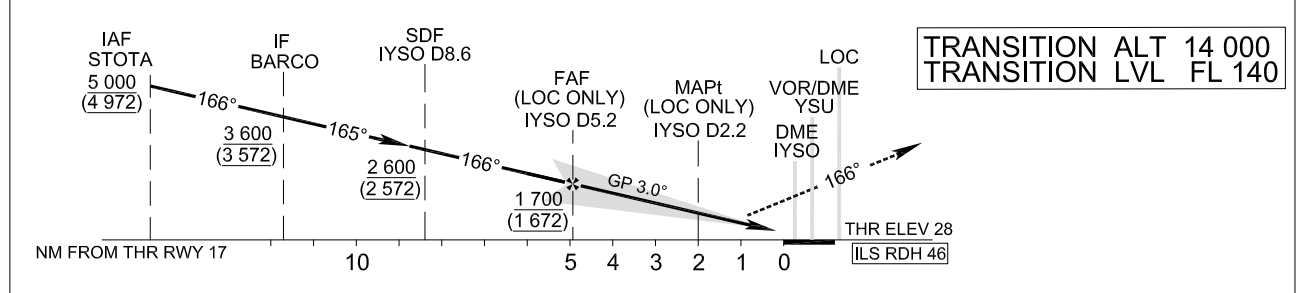
Note : Approach under ICAO Flight Procedure.



**NOTE**  
1. RNAV 1 operation.  
2. GNSS required.  
3. ATS surveillance service required.  
4. DME required on an ILS/LOC approach.

| RECOMMENDED PROFILE(LOC ONLY)               | DME IYISO | 5                | 4                | 3            | 2.1          |
|---|-----------|------------------|------------------|--------------|--------------|
| Final Approach Gradient 5.31%, 323 ft ft/NM | ALT(HGT)  | 1 644<br>(1 616) | 1 321<br>(1 293) | 998<br>(970) | 740<br>(712) |

**MISSED APPROACH**  
Climb to 4 000 ft on track of 166° to SOONA.



| CATEGORY      |                 | DA(DH)/MDA(MDH) | A       | B                    | C | D | Knots |                 |         |     |     |     |     |     |
|---------------|-----------------|-----------------|---------|----------------------|---|---|-------|-----------------|---------|-----|-----|-----|-----|-----|
| STA           | CAT-1 (CG 2.5%) | FULL            | 351     | 1 000 m              |   |   |       | Rate of descent | V/V fpm | 318 | 478 | 637 | 796 | 955 |
|               |                 | ALS INOP        | (323)   | 1 700 m              |   |   |       |                 |         |     |     |     |     |     |
|               | CAT-1 (CG 5.0%) | FULL            | 228     | RVR 550 m, VIS 800 m |   |   |       |                 |         |     |     |     |     |     |
|               |                 | ALS INOP        | (200)   | 1 200 m              |   |   |       |                 |         |     |     |     |     |     |
|               | LOC (CG 2.5%)   | FULL            | 910     | 3 300 m              |   |   |       |                 |         |     |     |     |     |     |
|               |                 | ALS INOP        | (882)   | 4 000 m              |   |   |       |                 |         |     |     |     |     |     |
| LOC (CG 5.0%) | FULL            | 740             | 3 200 m |                      |   |   |       |                 |         |     |     |     |     |     |
|               | ALS INOP        | (712)           | 3 900 m |                      |   |   |       |                 |         |     |     |     |     |     |

\* Timing Not authorized for defining MAPt.  
\* Circling Not authorized.

Change : Information of missed approach.

YEOSU/Yeosu (RKJY)  
 ILS or LOC Z RWY 17

AERONAUTICAL DATA TABULATION

| ILS/LOC Approach to RWY 17 from YEONA |                          | Coordinates    |                 |
|---------------------------------------|--------------------------|----------------|-----------------|
| Fix/point                             |                          | Coordinates    |                 |
| SKOTA (IAF)                           |                          | 35°06'04.9" N  | 127°29'24.2" E  |
| BARCO (IF)                            |                          | 35°01'41.4" N  | 127°31'33.6" E  |
| JY401 (SDF)                           |                          | 34°58'37.8" N  | 127°33'04.0" E  |
| D5.2 IYSO (FAP)                       | BRG 165.52°/5.17 NM IYSO | 34°55'44.1" N  | 127°34'29.3" E  |
| D2.2 IYSO (MAP† LOC ONLY)             | BRG 165.52°/2.20 NM IYSO | 34°52' 58.5" N | 127°35' 50.6" E |
| THR RWY 17                            |                          | 34°51'03.73" N | 127°36'46.77" E |
| IYSO DME                              |                          | 34°50'57.3" N  | 127°36'54.6" E  |
| YSU VOR/DME                           |                          | 34°50'34.2" N  | 127°37'08.2" E  |
| IYSO LOC                              |                          | 34°49'52.0" N  | 127°37'21.9" E  |
| SOONA                                 |                          | 34°38'27.5" N  | 127°42'56.0" E  |

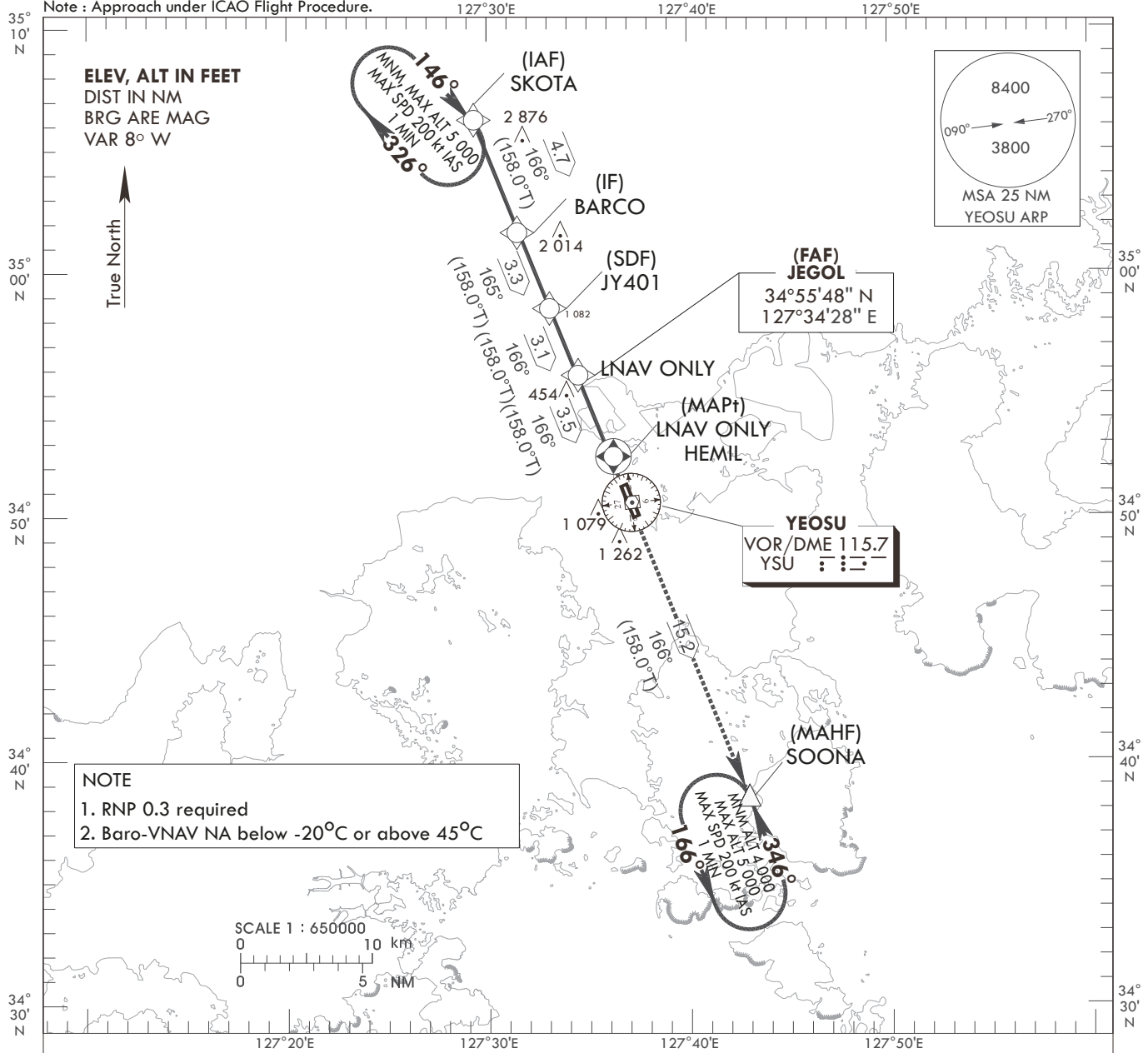
Change : Information of Fix/point.

**INSTRUMENT APPROACH CHART - ICAO**  
**AERODROME ELEV 53 ft**  
**HEIGHTS RELATED TO THR RWY 17-ELEV 28 ft**

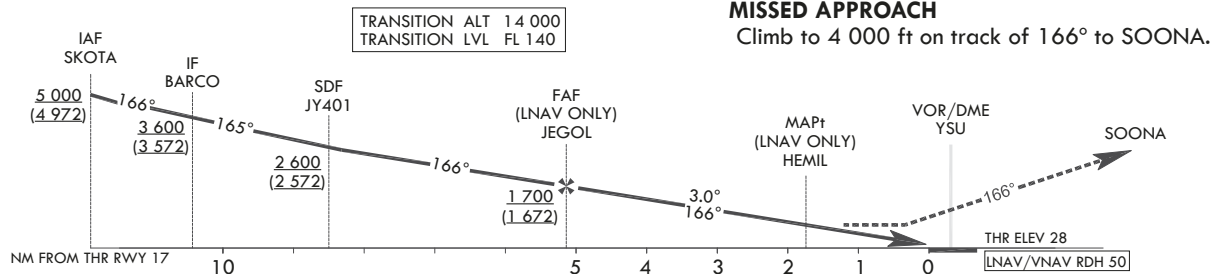
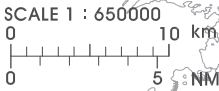
|         |     |                |
|---------|-----|----------------|
| SACHEON | APP | 135.4          |
| YEOSU   | TWR | 122.5<br>240.9 |

**YEOSU/Yeosu (RKJY)**  
**RNAV(GNSS) RWY 17**

Note : Approach under ICAO Flight Procedure.



**NOTE**  
 1. RNP 0.3 required  
 2. Baro-VNAV NA below -20°C or above 45°C



| CATEGORY | DA(DH)/MDA(MDH) | A        | B         | C | D       | Knots |    |     |     |     |  |  |  |
|----------|-----------------|----------|-----------|---|---------|-------|----|-----|-----|-----|--|--|--|
|          |                 |          |           |   |         | 60    | 90 | 120 | 150 | 180 |  |  |  |
| STA      | LNAV/VNAV       | FULL     | 910 (882) |   | 3 300 m |       |    |     |     |     |  |  |  |
|          |                 | ALS INOP |           |   | 4 000 m |       |    |     |     |     |  |  |  |
|          | LNAV            | FULL     | 1 040     |   | 4 100 m |       |    |     |     |     |  |  |  |
|          |                 | ALS INOP | (1 012)   |   | 4 900 m |       |    |     |     |     |  |  |  |

Rate of descent V/V fpm 319 478 637 796 956  
 \* Timing Not authorized for defining MAPt.  
 \* Circling Not authorized.

Change : Information of radial, obstacle height, Missed approach and WX minima.

YEOSU/Yeosu (RKJY)  
RNAV(GNSS) RWY 17  
HOLDING PROCEDURE

AERONAUTICAL DATA TABULATION

Instrument Approach Procedure Coding Tables

RNAV(GNSS) RWY 17

| Serial Number | Path Descriptor | Waypoint Identifier | Fly-over | Course/Track<br>°M(°T) | Distance (NM) | Turn direction | Altitude (ft)    | Speed (kt) | Coordinates            | VPA/RDH  | Navigation specification | Remarks                    |
|---------------|-----------------|---------------------|----------|------------------------|---------------|----------------|------------------|------------|------------------------|----------|--------------------------|----------------------------|
| 001           | IF              | SKOTA               | -        | -                      | -             | -              | +5 000           | -          | 350604.9 N 1272924.2 E | -        | RNP APCH                 | IAF                        |
| 002           | TF              | BARCO               | -        | 166(158.0)             | 4.7           | -              | +3 600           | -          | 350141.4 N 1273133.6 E | -        | RNP APCH                 | IF                         |
| 003           | TF              | JY401               | -        | 165(158.0)             | 3.3           | -              | +2 600           | -          | 345837.8 N 1273304.0 E | -        | RNP APCH                 | SDF                        |
| 004           | TF              | JEGOL               | -        | 166(158.0)             | 3.1           | -              | +1 700           | -          | 345547.5 N 1273427.6 E | -        | RNP APCH                 | FAF                        |
| 005           | TF              | HEMIL               | Y        | 166(158.0)             | 3.5           | -              | +1 040           | -          | 345232.9 N 1273603.1 E | -3.00/50 | RNP APCH                 | MAPt                       |
| 006           | TF              | SOONA               | Y        | 166(158.0)             | 15.2          | -              | -                | -          | 343827.5 N 1274256.0 E | -        | RNP APCH                 | -                          |
| 007           | HM              | SOONA               | Y        | 346(338.5)             | -             | L              | -4 000<br>+5 000 | -200       | 343827.5 N 1274256.0 E | -        | RNP APCH                 | 1 min<br>(Outbound timing) |

HOLDING PROCEDURE

| Holding Identification | Path Descriptor | Waypoint Identifier | Fly-over | Course/Track<br>°M(°T) | Time (min) | Turn direction | Altitude (ft) | Speed (kt) | Coordinates            | VPA/RDH | Navigation specification | Remarks |
|------------------------|-----------------|---------------------|----------|------------------------|------------|----------------|---------------|------------|------------------------|---------|--------------------------|---------|
| RNAV(GNSS) RWY 17      | HM              | SKOTA               | Y        | 146(138.0)             | 1          | R              | @5 000        | -200       | 350604.9 N 1272924.2 E | -       | RNAV 1                   | -       |

Change : Information of Course/Track.

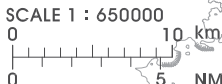
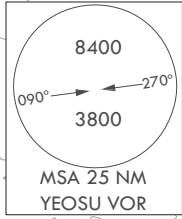
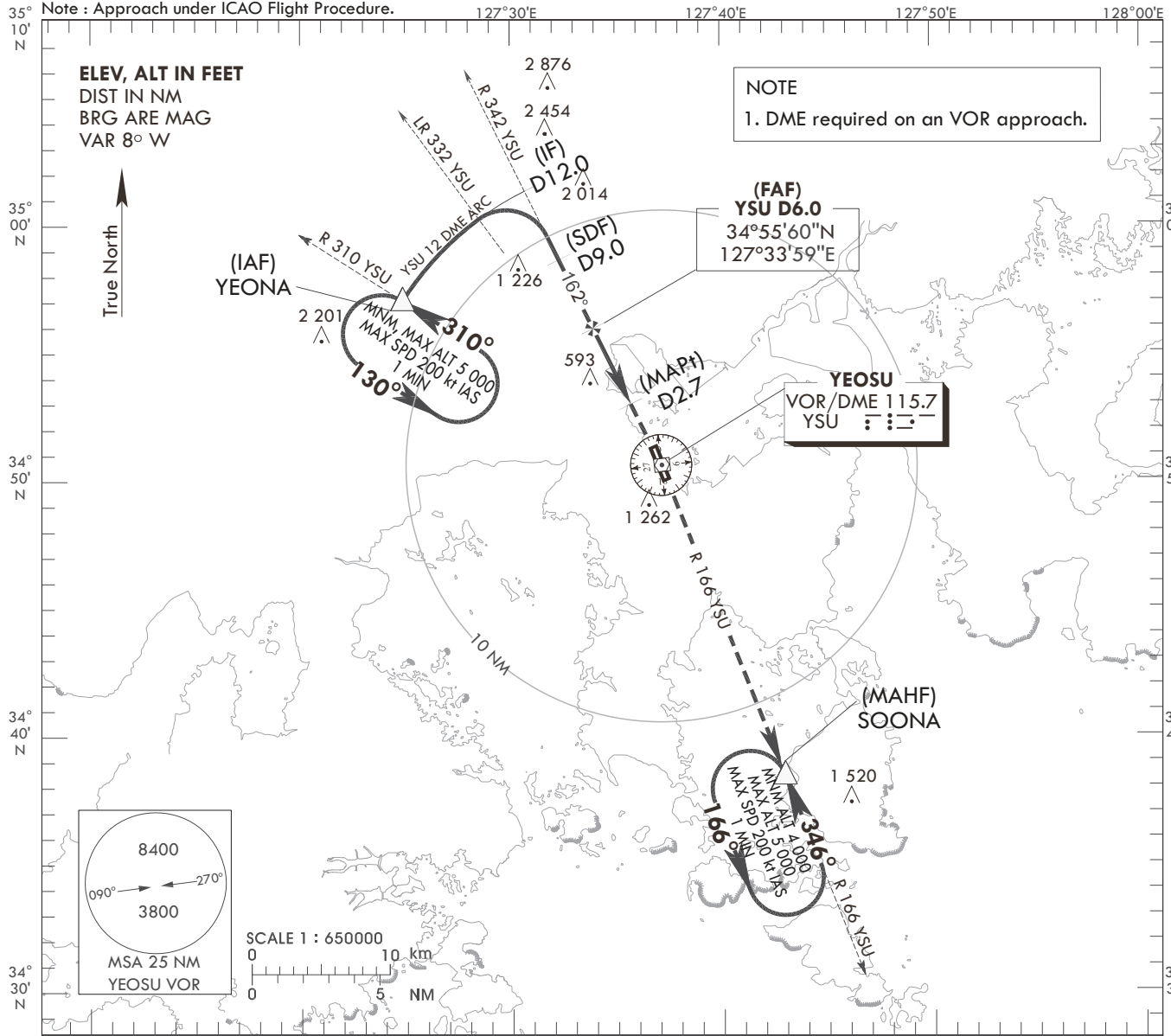
**INSTRUMENT APPROACH CHART - ICAO**

AERODROME ELEV **53** ft  
HEIGHTS RELATED TO  
THR RWY 17-ELEV **28** ft

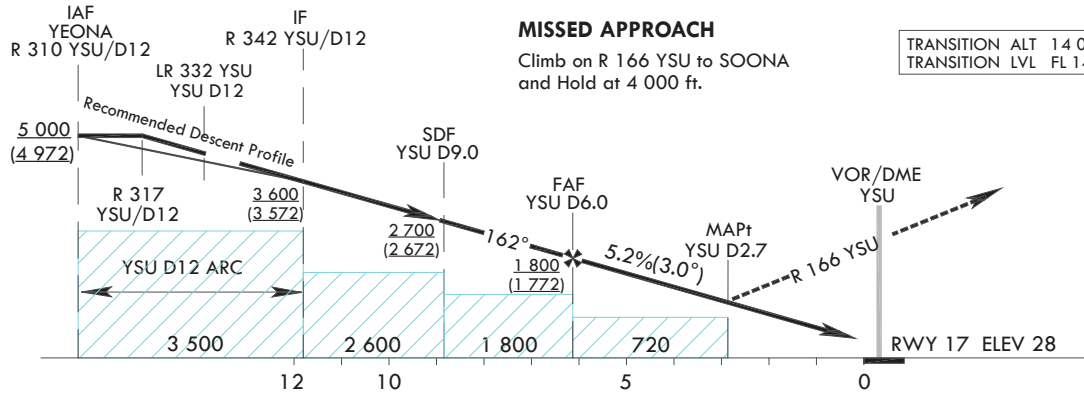
SACHEON APP 135.4  
YEOSU TWR 122.5  
240.9

**YEOSU/Yeosu (RKJY)**  
**VOR RWY 17**

Note : Approach under ICAO Flight Procedure.



| RECOMMENDED PROFILE                      | DME YSU  | 5                | 4                | 3            | 2.7          |
|--|----------|------------------|------------------|--------------|--------------|
| Final Approach Gradient 5.22%, 317 ft/NM | ALT(HGT) | 1 483<br>(1 455) | 1 166<br>(1 138) | 849<br>(821) | 760<br>(732) |



| CATEGORY      | FULL     | DA(DH)/MDA(MDH) | A  |    |     |     | B       |    |    |     | C   |     |    |    | D       |     |     |     | Knots | Rate of descent |
|---------------|----------|-----------------|----|----|-----|-----|---------|----|----|-----|-----|-----|----|----|---------|-----|-----|-----|-------|-----------------|
|               |          |                 | 60 | 90 | 120 | 150 | 180     | 60 | 90 | 120 | 150 | 180 | 60 | 90 | 120     | 150 | 180 |     |       |                 |
| STA (CG 2.5%) | FULL     | 900 (872)       |    |    |     |     | 3 300 m |    |    |     |     |     |    |    | V/V fpm | 317 | 476 | 634 | 793   | 951             |
|               | ALS INOP |                 |    |    |     |     | 4 000 m |    |    |     |     |     |    |    |         |     |     |     |       |                 |
| STA (CG 5.0%) | FULL     | 740 (712)       |    |    |     |     | 3 300 m |    |    |     |     |     |    |    |         |     |     |     |       |                 |
|               | ALS INOP |                 |    |    |     |     | 4 000 m |    |    |     |     |     |    |    |         |     |     |     |       |                 |

Change : Information of obstacle height, radial, Missed approach and WX minima.

YEOSU/Yeosu (RKJY)  
 VOR RWY 17

AERONAUTICAL DATA TABULATION

| VOR Approach to RWY17 from YEONA |                            |                |                 |
|----------------------------------|----------------------------|----------------|-----------------|
| Fix/point                        |                            | Coordinates    |                 |
| YEONA(IAF)                       | - R 310 YSU/12.00 NM YSU   | 34°57'03.8" N  | 127°24'52.1" E  |
| D12 YSU(IF)                      | - BRG 161.94°/12.00 NM YSU | 35°01'24.8" N  | 127°30'50.3" E  |
| D9 YSU(SDF)                      | - BRG 161.96°/9.00 NM YSU  | 34°58'42.2" N  | 127°32'24.9" E  |
| D6 YSU(FAF)                      | - BRG 161.97°/6.00 NM YSU  | 34°55'59.5" N  | 127°33'59.4" E  |
| D2.7 YSU(MAPt)                   | - BRG 161.99°/2.70 NM YSU  | 34°53'00.6" N  | 127°35'43.3" E  |
| THR RWY 17                       |                            | 34°51'03.73" N | 127°36'46.77" E |
| YSU VOR/DME                      |                            | 34°50'34.2" N  | 127°37'08.2" E  |
| SOONA                            | - BRG 165.96°/13.00 NM YSU | 34°38'27.5" N  | 127°42'56.0" E  |

Change : Information of bearing and Coordinates.



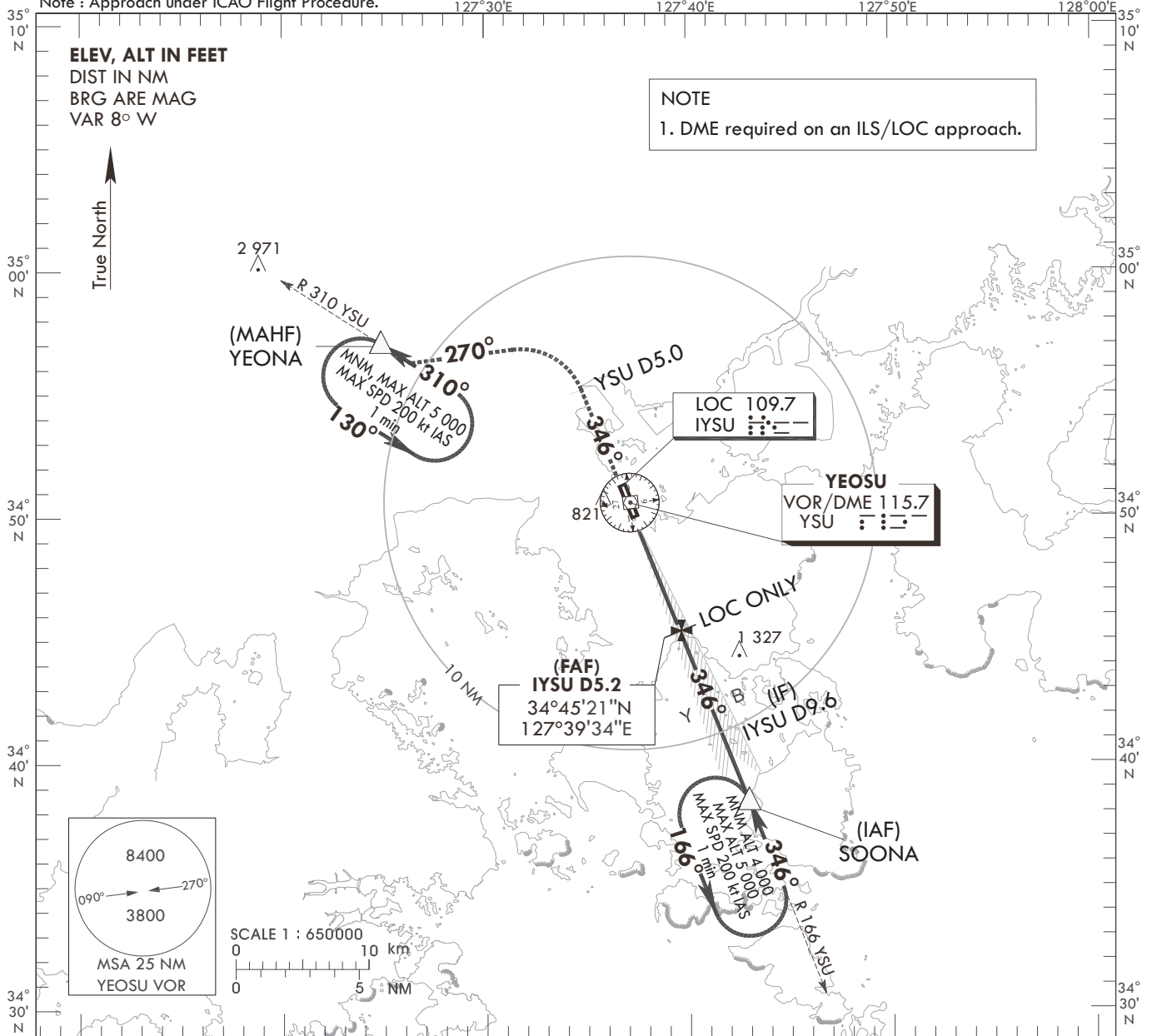
**INSTRUMENT APPROACH CHART - ICAO**

AERODROME ELEV 53 ft  
HEIGHTS RELATED TO  
THR RWY 35-ELEV 31 ft

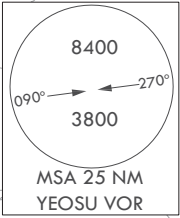
SACHEON APP 135.4  
YEOSU TWR 122.5  
240.9

**YEOSU/Yeosu (RKJY)**  
**ILS or LOC Y RWY 35**

Note : Approach under ICAO Flight Procedure.



**NOTE**  
1. DME required on an ILS/LOC approach.



| RECOMMENDED PROFILE(LOC ONLY)            |  | DME IYSU      |               |             |           | 127°40'E              |  | 127°50'E                |  |
|--|--|---------------|---------------|-------------|-----------|-----------------------|--|-------------------------|--|
| Final Approach Gradient 5.31%, 323 ft/NM |  | 5             | 4             | 3           | 2.5       | TRANSITION ALT 14 000 |  | IAF SOONA R 166 YSU/D13 |  |
|  |  | ALT(HGT)      |               |             |           | TRANSITION LVL FL 140 |  |                         |  |
|  |  | 1 646 (1 615) | 1 323 (1 292) | 1 001 (970) | 850 (819) |                       |  |                         |  |

| MISSED APPROACH   |  | LOC         |  | SDF (LOC ONLY)            |  | FAF (LOC ONLY) |  | IF            |  |
|---|--|-------------|--|---------------------------|--|----------------|--|---------------|--|
| Climb straight ahead to YSU 5 DME, Then turn LEFT HDG 270° to intercept and Climb on R 310 YSU to YEONA and Hold at 5 000 ft. |  | VOR/DME YSU |  | IYSU D3.1                 |  | IYSU D5.2      |  | IYSU D9.6     |  |
|   |  | DME IYSU    |  | MAPt (LOC ONLY) IYSU D2.2 |  | 1 030 (999)    |  | 3 100 (3 069) |  |
|   |  | ILS RDH 50  |  | GP 3.0°                   |  | 1 700 (1 669)  |  | 4 000 (3 969) |  |
|   |  | THR ELEV 31 |  |                           |  |                |  | R 166 YSU/D13 |  |

| CATEGORY      | DA(DH)/MDA(MDH) | A        |       |  |  | B       |         |  |  | C |   |  |  | D |  |  |  |
|---------------|-----------------|----------|-------|--|--|---------|---------|--|--|---|---|--|--|---|--|--|--|
|               |                 | A        |       |  |  | B       |         |  |  | C |   |  |  | D |  |  |  |
| STA           | CAT-1 (CG 2.5%) | FULL     | 465   |  |  |         | 1 900 m |  |  |   | Knots 60 90 120 150 180                     |  |  |   |  |  |  |
|               |                 | ALS INOP | (434) |  |  |         | 2 300 m |  |  |   | Rate of descent V/V fpm 318 478 637 796 955 |  |  |   |  |  |  |
|               | CAT-1 (CG 5.0%) | FULL     | 234   |  |  |         | 750 m   |  |  |   |   |  |  |   |  |  |  |
|               |                 | ALS INOP | (203) |  |  |         | 1 200 m |  |  |   |   |  |  |   |  |  |  |
| LOC (CG 2.5%) | FULL            | 850      |       |  |  | 3 400 m |         |  |  |   |   |  |  |   |  |  |  |
|               | ALS INOP        | (819)    |       |  |  | 3 800 m |         |  |  |   |   |  |  |   |  |  |  |

\* Timing Not authorized for defining MAPt.  
\* Circling Not authorized.

Change : Information of obstacle height, and radial.

YEOSU/Yeosu (RKJY)  
 ILS or LOC Y RWY 35

AERONAUTICAL DATA TABULATION

| ILS/LOC Approach to RWY 35 from SOONA |                          |                                |
|---------------------------------------|--------------------------|--------------------------------|
| Fix/point                             |                          | Coordinates                    |
| SOONA (IAF)                           | R 165 YSU /13.00 NM YSU  | 34°38'27.5" N 127°42'56.0" E   |
| D9.6 IYSU (IF)                        | BRG 345.61°/9.58 NM IYSU | 34°41'14.7" N 127°41'34.5" E   |
| D5.2 IYSU (FAP)                       | BRG 345.59°/5.17 NM IYSU | 34°45'21.2" N 127°39'34.2" E   |
| D3.1 IYSU (SDF LOC ONLY)              | BRG 345.59°/3.10 NM IYSU | 34°47'16.2" N 127°38'38.0" E   |
| D2.2 IYSU (MAPt LOC ONLY)             | BRG 345.59°/2.20 NM IYSU | 34°48'06.4" N 127°38'13.5" E   |
| THR RWY 35                            |                          | 34°50'00.53" N 127°37'17.70" E |
| IYSU DME                              |                          | 34°50'10.5" N 127°37'18.1" E   |
| YSU VOR/DME                           |                          | 34°50'34.2" N 127°37'08.2" E   |
| IYSU LOC                              |                          | 34°51'13.0" N 127°36'42.2" E   |
| D5 YSU                                | BRG 345.59°/5.00 NM YSU  | 34°55'10.9" N 127°34'45.7" E   |
| YEONA                                 | BRG 270.30°/12.00 NM YSU | 34°57'03.8" N 127°24'52.1" E   |

Change : Bearing information.

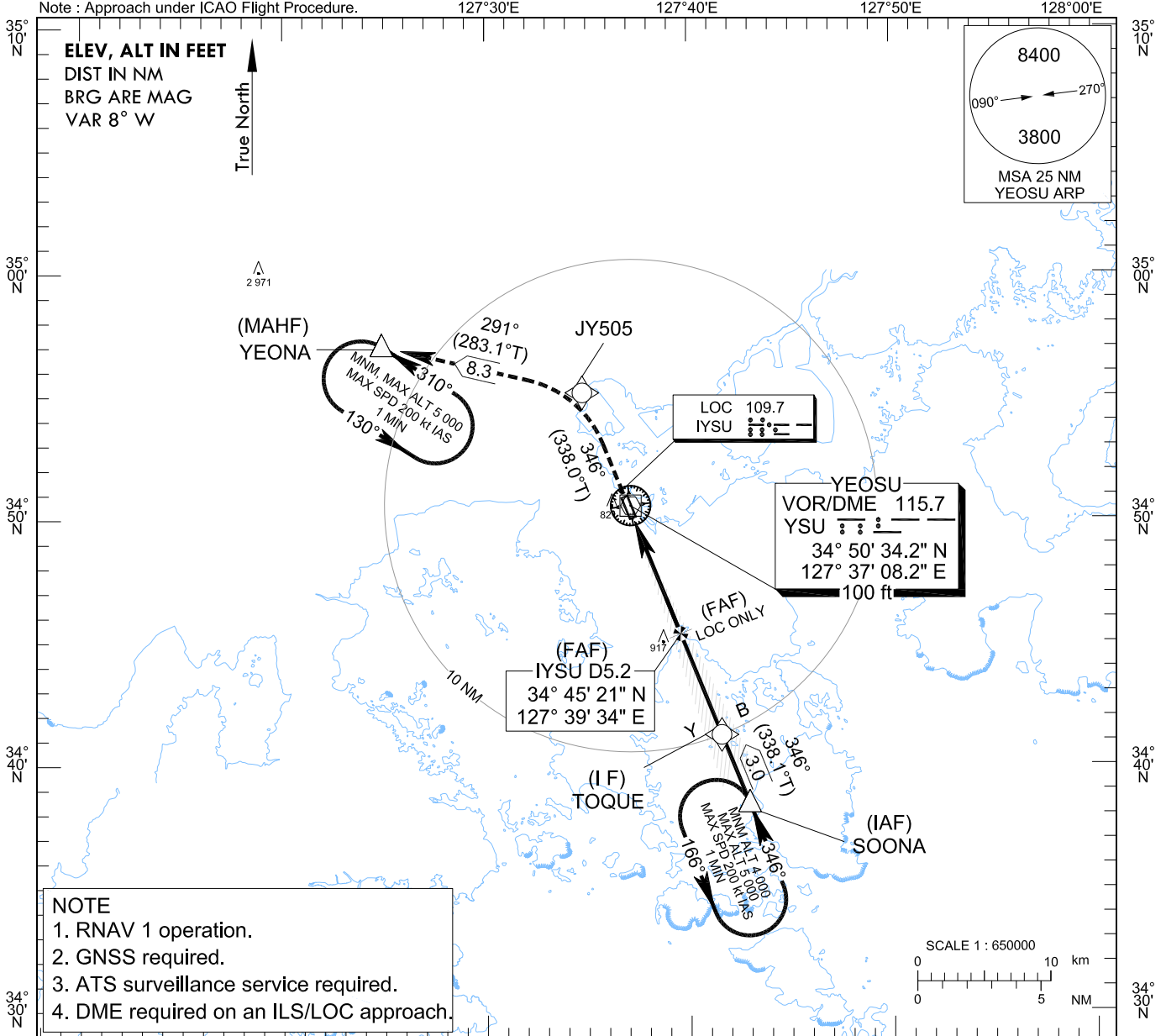
**INSTRUMENT  
APPROACH  
CHART - ICAO**

**AERODROME ELEV 53 ft**  
HEIGHTS REALTED TO  
THR RWY 35 - ELEV 31 ft

SACHEON APP 135.4  
YEOSU TWR 122.5  
240.9

**YEOSU/Yeosu (RKJY)**  
**ILS or LOC Z RWY 35**

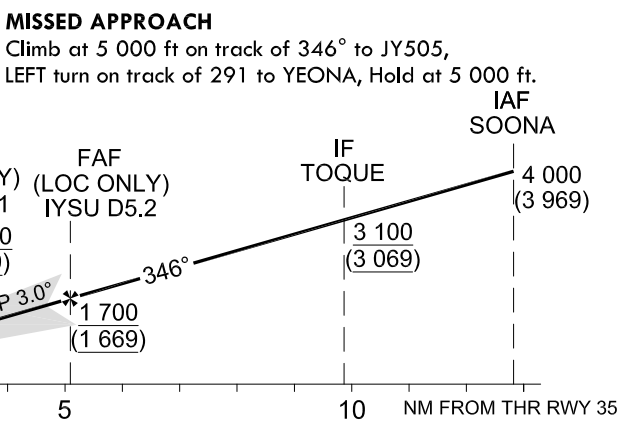
Note : Approach under ICAO Flight Procedure.



- NOTE**
1. RNAV 1 operation.
  2. GNSS required.
  3. ATS surveillance service required.
  4. DME required on an ILS/LOC approach.

| RECOMMENDED PROFILE(LOC ONLY)              | DME IYSU | 5              | 4              | 3             | 2.5          |
|--|----------|----------------|----------------|---------------|--------------|
| Final Approach Gradient 5.31%, 323ft FT/NM | ALT(HGT) | 1646<br>(1615) | 1323<br>(1292) | 1001<br>(970) | 850<br>(819) |

TRANSITION ALT 14 000  
TRANSITION LVL FL 140



| CATEGORY         | DA(DH)/<br>MDA(MDH) | A        |       |    |         | B  |         |     |      | C   |         |     |         | D |         |  |                            |     |     |     |     |     |
|------------------|---------------------|----------|-------|----|---------|----|---------|-----|------|-----|---------|-----|---------|---|---------|--|----------------------------|-----|-----|-----|-----|-----|
|                  |                     | Knots    |       | 60 |         | 90 |         | 120 |      | 150 |         | 180 |         |   |         |  |                            |     |     |     |     |     |
| STA              | CAT-1<br>(CG 2.5%)  | FULL     | 465   |    | 1 900 m |    | 2 300 m |     | 750m |     | 1 200 m |     | 3 400 m |   | 3 800 m |  | Rate of descent<br>V/V fpm | 318 | 478 | 637 | 796 | 955 |
|                  |                     | ALS INOP | (434) |    |         |    |         |     |      |     |         |     |         |   |         |  |                            |     |     |     |     |     |
|                  | CAT-1<br>(CG 5.0%)  | FULL     | 234   |    |         |    |         |     |      |     |         |     |         |   |         |  |                            |     |     |     |     |     |
|                  |                     | ALS INOP | (203) |    |         |    |         |     |      |     |         |     |         |   |         |  |                            |     |     |     |     |     |
| LOC<br>(CG 2.5%) | FULL                | 850      |       |    |         |    |         |     |      |     |         |     |         |   |         |  |                            |     |     |     |     |     |
|                  | ALS INOP            | (819)    |       |    |         |    |         |     |      |     |         |     |         |   |         |  |                            |     |     |     |     |     |

Change : Information of missed approach.

YEOSU/Yeosu (RKJY)  
 ILS or LOC Z RWY 35

AERONAUTICAL DATA TABULATION

| ILS/LOC Approach to RWY 35 from SOONA |                          |                |                 |
|---------------------------------------|--------------------------|----------------|-----------------|
| Fix/point                             |                          | Coordinates    |                 |
| SOONA(IAF)                            |                          | 34°38'27.5" N  | 127°42'56.0" E  |
| TOQUE(IF)                             |                          | 34°41'14.7" N  | 127°41'34.5" E  |
| D5.2 IYSU (FAP)                       | BRG 345.59°/5.17 NM IYSU | 34°45'21.2" N  | 127°39'34.2" E  |
| D3.1 IYSU (SDF LOC ONLY)              | BRG 345.59°/3.10 NM IYSU | 34°47'16.2" N  | 127°38'38.0" E  |
| D2.2 IYSU (MAPt LOC ONLY)             | BRG 345.59°/2.20 NM IYSU | 34°48'06.4" N  | 127°38'13.5" E  |
| THR RWY 35                            |                          | 34°50'00.53" N | 127°37'17.70" E |
| IYSU DME                              |                          | 34°50'10.5" N  | 127°37'18.1" E  |
| YSU VOR/DME                           |                          | 34°50'34.2" N  | 127°37'08.2" E  |
| IYSU LOC                              |                          | 34°51'13.0" N  | 127°36'42.2" E  |
| JY505                                 |                          | 34°55'10.9" N  | 127°34'45.7" E  |
| YEONA                                 |                          | 34°57'03.8" N  | 127°24'52.1" E  |

Change : Information of Fix/point.

**INSTRUMENT APPROACH CHART - ICAO**

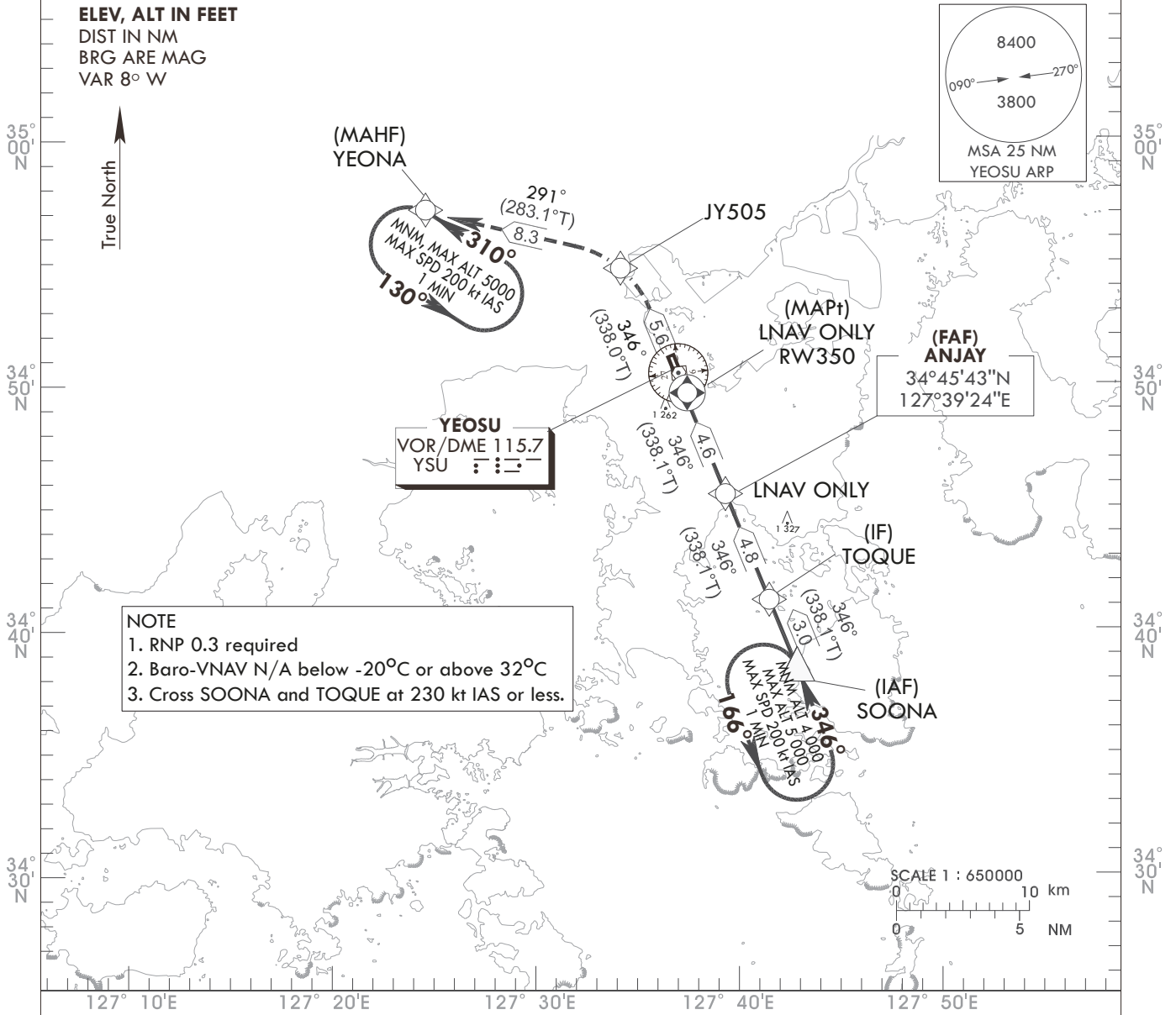
**AERODROME ELEV 53 ft**  
**HEIGHTS RELATED TO THR RWY 35-ELEV 31 ft**

|         |     |       |
|---------|-----|-------|
| SACHEON | APP | 135.4 |
| YEOSU   | TWR | 122.5 |
|         |     | 240.9 |

**YEOSU/Jeosu (RKJY)**  
**RNAV(GNSS) RWY 35**

Note : Approach under ICAO Flight Procedure.

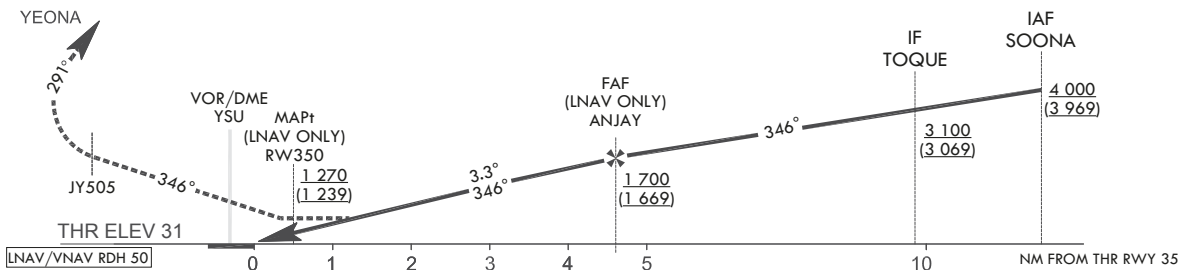
127° 30'E      127° 40'E      127° 50'E



**MISSED APPROACH**

TRANSITION ALT 14 000  
 TRANSITION LVL FL 140

Climb to 5 000 ft on track of 346° to JY505, LEFT turn on track of 291° to YEONA.



| CATEGORY | DA(DH)/MDA(MDH) | A        | B       | C | D       | Knots                      |  |     |     |     |       |
|----------|-----------------|----------|---------|---|---------|----------------------------|--|-----|-----|-----|-------|
|          |                 |          |         |   |         | 60                         | 90   | 120 | 150 | 180 |       |
| STA      | LNAV/VNAV       | FULL     | 1 070   |   | 4 400 m | Rate of descent<br>V/V fpm | 350  | 525 | 700 | 875 | 1 050 |
|          |                 | ALS INOP | (1 039) |   | 4 900 m |                            |  |     |     |     |       |
|          | LNAV            | FULL     | 1 270   |   | 5 000 m |                            | * Timing Not authorized for defining MAPt. |     |     |     |       |
|          |                 | ALS INOP | (1 239) |   | 5 000 m |                            | * Circling Not authorized.                 |     |     |     |       |

YEOSU/Yeosu (RKJY)  
 RNAV(GNSS) RWY 35  
 HOLDING PROCEDURE

AERONAUTICAL DATA TABULATION

Instrument Approach Procedure Coding Tables

RNAV(GNSS) RWY 35

| Serial Number | Path Descriptor | Waypoint Identifier | Fly-over | Course/Track<br>°M(°T) | Distance (NM) | Turn direction | Altitude (ft) | Speed (kt) | Coordinates              | VPA/RDH  | Navigation specification | Remarks                    |
|---------------|-----------------|---------------------|----------|------------------------|---------------|----------------|---------------|------------|--------------------------|----------|--------------------------|----------------------------|
| 001           | IF              | SOONA               | -        | -                      | -             | -              | +4 000        | -230       | 343827.5 N 1274256.0 E   | -        | RNP APCH                 | IAF                        |
| 002           | TF              | TOQUE               | -        | 346(338.1)             | 3.0           | -              | +3 100        | -230       | 344114.7 N 1274134.5 E   | -        | RNP APCH                 | IF                         |
| 003           | TF              | ANJAY               | -        | 346(338.1)             | 4.8           | -              | +1 700        | -          | 344542.7 N 1273923.7 E   | -        | RNP APCH                 | FAF                        |
| 004           | TF              | RW350               | Y        | 346(338.1)             | 4.6           | -              | +1 270        | -          | 345000.53 N 1273717.70 E | -3.30/50 | RNP APCH                 | MAPt                       |
| 005           | TF              | JY505               | -        | 346(338.0)             | 5.6           | -              | -             | -          | 345510.9 N 1273445.7 E   | -        | RNP APCH                 | -                          |
| 006           | TF              | YEONA               | Y        | 291(283.1)             | 8.3           | -              | -             | -          | 345703.8 N 1272452.1 E   | -        | RNP APCH                 | -                          |
| 007           | HM              | YEONA               | Y        | 310(302.8)             | -             | L              | @5 000        | -200       | 345703.8 N 1272452.1 E   | -        | RNP APCH                 | 1 min<br>(Outbound timing) |

HOLDING PROCEDURE

| Holding Identification | Path Descriptor | Waypoint Identifier | Fly-over | Course/Track<br>°M(°T) | Time (min) | Turn direction | Altitude (ft)    | Speed (kt) | Coordinates            | VPA/RDH | Navigation specification | Remarks |
|------------------------|-----------------|---------------------|----------|------------------------|------------|----------------|------------------|------------|------------------------|---------|--------------------------|---------|
| RNAV(GNSS) RWY 35      | HM              | SOONA               | Y        | 346(338.5)             | 1          | L              | -4 000<br>+5 000 | -200       | 343827.5 N 1274256.0 E | -       | RNAV 1                   | -       |

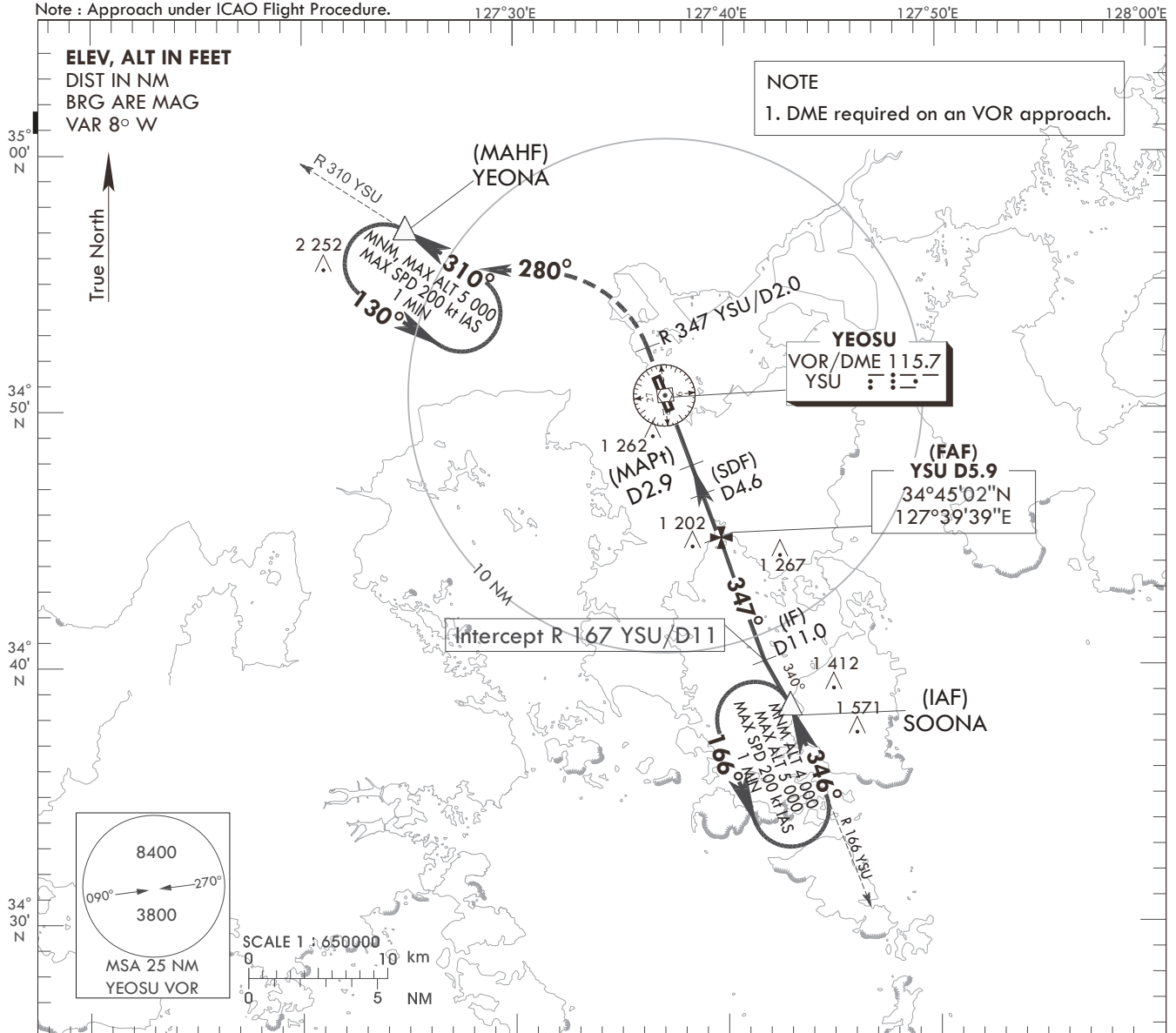
**INSTRUMENT APPROACH CHART - ICAO**

AERODROME ELEV 53 ft  
HEIGHTS RELATED TO  
THR RWY 35-ELEV 31 ft

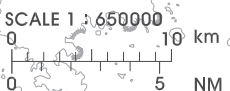
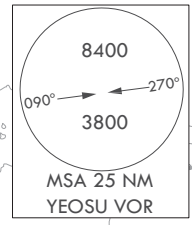
|         |     |       |
|---------|-----|-------|
| SACHEON | APP | 135.4 |
| YEOSU   | TWR | 122.5 |
|         |     | 240.9 |

**YEOSU/Yeosu (RKJY)**  
**VOR RWY 35**

Note : Approach under ICAO Flight Procedure.



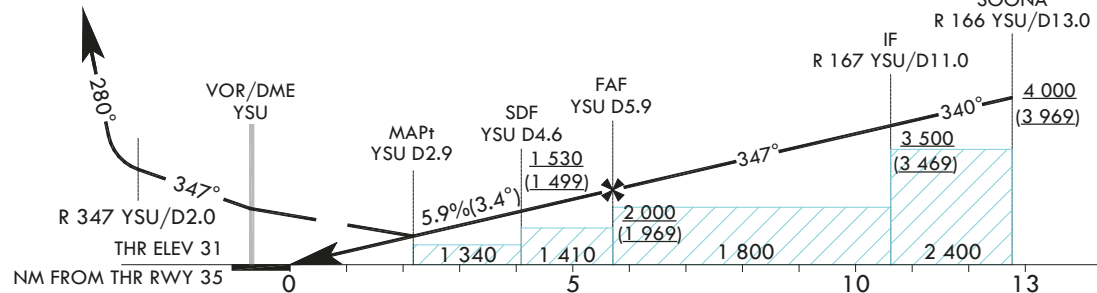
NOTE  
1. DME required on an VOR approach.



| RECOMMENDED PROFILE(LOC ONLY)           | DME IYSU | 5                | 4.1              |
|---|----------|------------------|------------------|
| Final Approach Gradient 5.9%, 360 ft/NM | ALT(HGT) | 1 676<br>(1 645) | 1 340<br>(1 309) |

**MISSED APPROACH**  
Climb straight ahead to R 347 YSU/D2.  
Then turn LEFT HDG 280° to intercept and  
Climb on R 310 YSU to YEONA. Hold at 5 000 ft.

TRANSITION ALT 14 000  
TRANSITION LVL FL 140



| CATEGORY | DA(DH)/MDA(MDH) | A                | B       | C | D | Knots |  |         |     |     |     |     |       |
|----------|-----------------|------------------|---------|---|---|-------|--|---------|-----|-----|-----|-----|-------|
|          |                 |                  |         |   |   | 60    | 90   | 120     | 150 | 180 |     |     |       |
| STA      | FULL            | 1 340<br>(1 309) | 5 000 m |   |   |       | Rate of descent  | V/V fpm | 360 | 540 | 720 | 900 | 1 080 |
|          | ALS INOP        |                  | 5 000 m |   |   |       | * Timing Not authorized for defining MAPt.<br>* Circling Not authorized. |         |     |     |     |     |       |

Change : Information of MAG VAR, obstacle height and radial.

YEOSU/Yeosu (RKJY)  
 VOR RWY 35

AERONAUTICAL DATA TABULATION

| VOR Approach to RWY35 from SOONA |                            |                                |
|----------------------------------|----------------------------|--------------------------------|
| Fix/point                        |                            | Coordinates                    |
| SOONA(IAF)                       | - YSU R 165 /13.00 NM YSU  | 34°38'27.5" N 127°42'56.0" E   |
| D11 YSU (IF)                     | - BRG 347.04°/11.00 NM YSU | 34°40'15.1" N 127°41'49.0" E   |
| D5.9 YSU (FAF)                   | - BRG 347.02°/5.90 NM YSU  | 34°45'02.2" N 127°39'38.9" E   |
| D4.6 YSU (SDF)                   | - BRG 347.01°/4.60 NM YSU  | 34°46'15.4" N 127°39'05.8" E   |
| D2.9 YSU (MAPt)                  | - BRG 347.01°/2.90 NM YSU  | 34°47'51.0" N 127°38'22.3" E   |
| THR RWY 35                       |                            | 34°50'00.53" N 127°37'17.70" E |
| YSU VOR /DME                     |                            | 34°50'34.2" N 127°37'08.2" E   |
| D2 YSU                           | - BRG 347.00°/2.00 NM YSU  | 34°52'26.8" N 127°36'17.0" E   |
| YEONA                            | - BRG 278.30°/12.00 NM YSU | 34°57'03.8" N 127°24'52.1" E   |

Change : Information of Bearing and Coordinates.